

MPC-5V1006

2~8°C Pharmacy Refrigerator



MPC-5V1006 2~8°C Pharmacy Refrigerator (1006 liters) is widely used in hospitals pharmacy stores and laboratories. This is for placing and preserving storage such as drugs, vaccines, enzymes, hormones, stem cells, extracted RNA and gene libraries and important biological and chemical reagents.

FEATURES



Fast pull down

Real air-forced cooling system



Super large space

1006-liter (35.5 cu.ft) space, more storage



Suction circulation system

Big fans for better temp uniformity



Universal castor wheels

Castors with brake & leveling feet



Lockable doors

2 Standard locks with keys for 3 doors



High quality steel material

Antibacterial and corrosion resistant



Precise temp. control

Temp. control accurate to 0.1°C



5 types of alarm

Audible and visual alarms



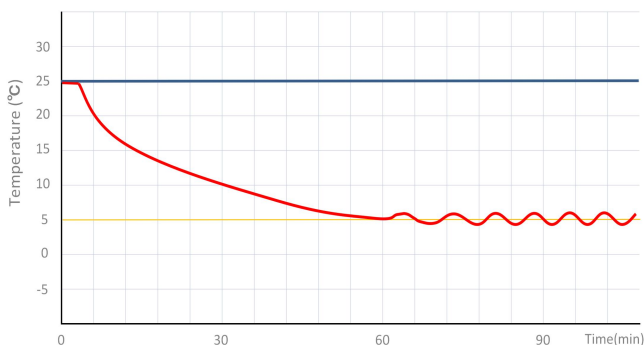
Variable space

Height adjustable shelves

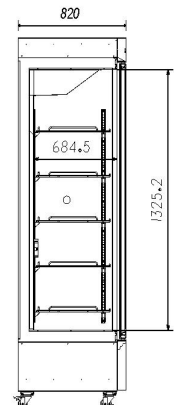
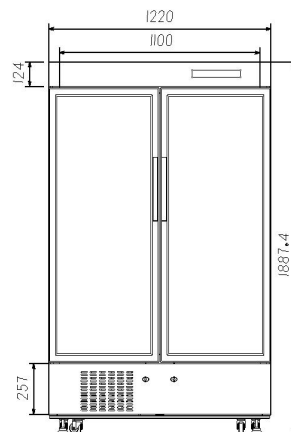


Eco-friendly

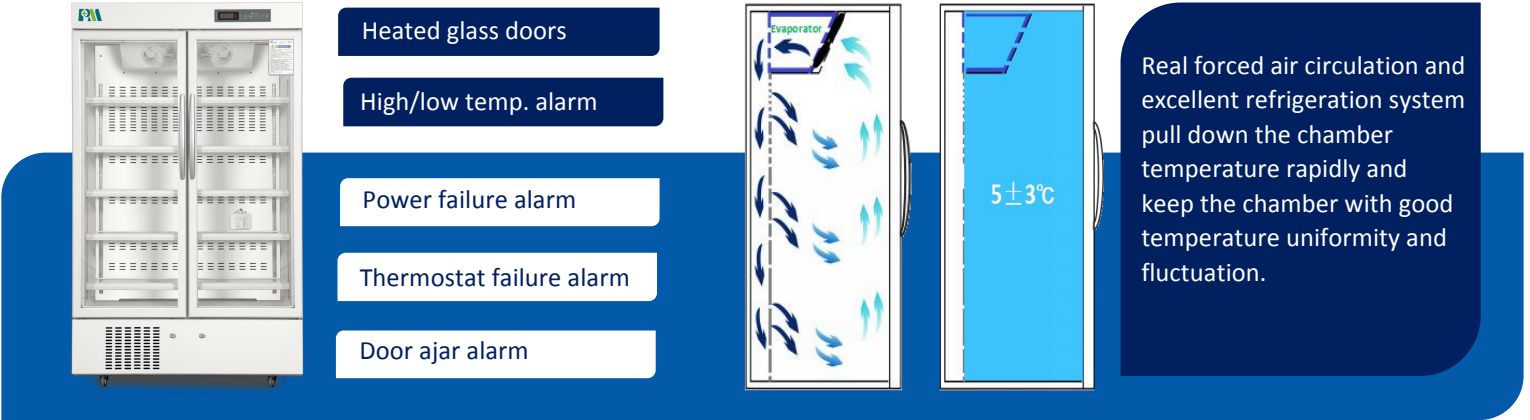
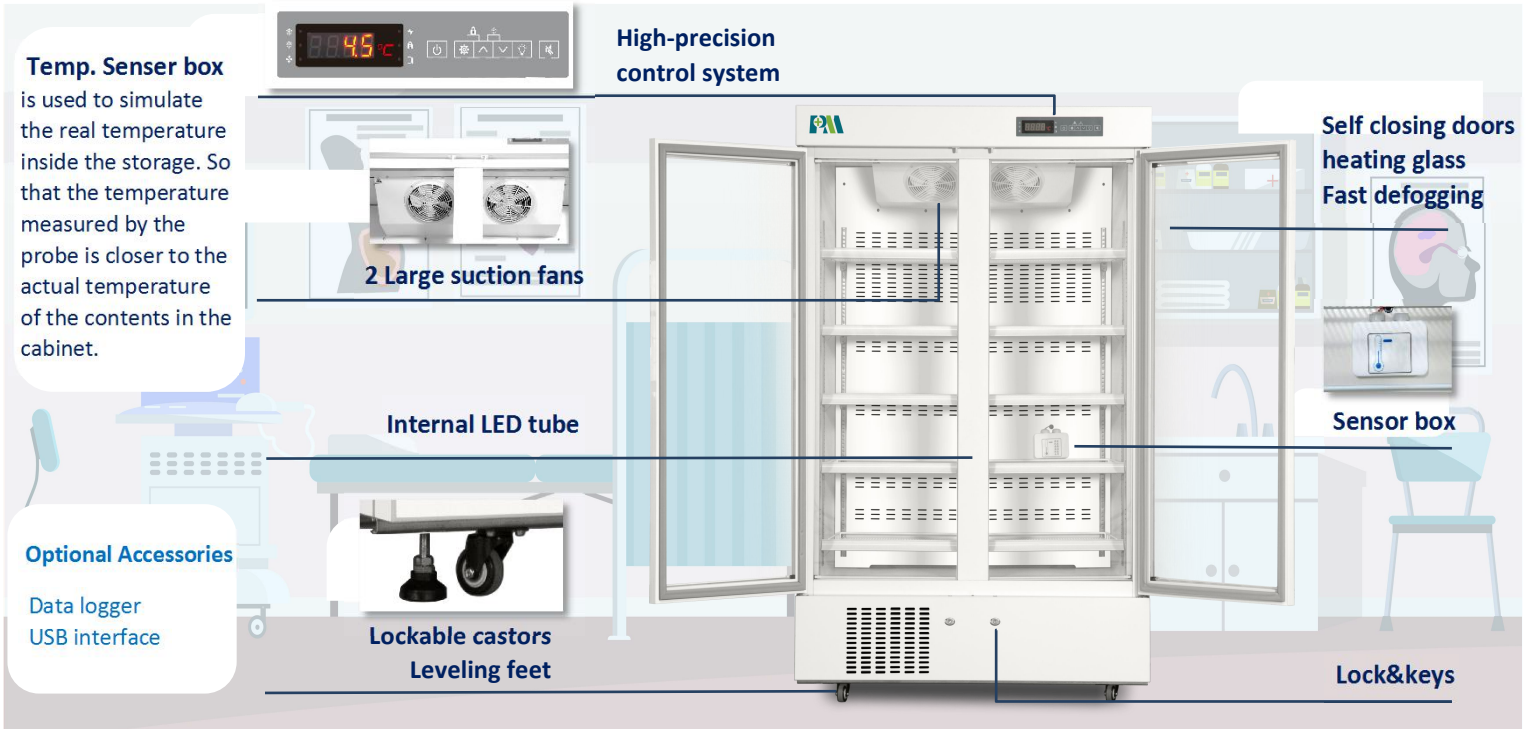
CFC-free refrigerant and energy-saving



MPC-5V1006 PULL DOWN TEST



STRUCTURE



- Heated glass doors
- High/low temp. alarm
- Power failure alarm
- Thermostat failure alarm
- Door ajar alarm

PARAMETER

Performance		Refrigeration System		Alarms	
Cooling method	Forced Air Cooling	Refrigerant	R600a	High/low temperature	Y
Defrost	Auto	Temp. controller	Microprocessor	Power failure	Y
Shelf/drawer	Shelves/10	Sensor	NTC	Sensor error	Y
Temperature range	2°C~8°C	Display	Digital display	Controller failure	Y
Ambient temperature	10~32°C	External material	Color Sprayed steel	Door ajar	Y
Noise (db)	53	Compressor QTY	1	Power failure backup	8 hours

Electrical Data		Dimensions		Other	
Voltage frequency(V/Hz)	220V 50Hz	Package size(W*D*H)(mm)	1335*945*2000	Inside door	10 shelves
Power (W)	425W	Capacity (L/cu.ft)	1006/35.5	Remote alarm port	Optional
Current (A)	2.4A	Exterior size(W*D*H)(mm)	1240*820*1900	Access port QTY/Dia.	1/25mm
Power consumption	6.23kWh/24h	Interior size(W*D*H)(mm)	1100*684*1325	Internal material	Color Sprayed steel