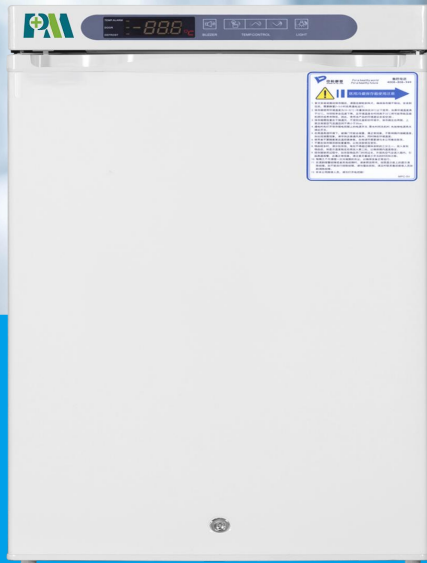


# MPC-5V100A

2~8 °C Pharmacy Refrigerator



MPC-5V100A 2~8°C Pharmacy Refrigerator (100 liter) is widely used in hospitals pharmacy stores and laboratories. This is for placing and preserving storage such as drugs, vaccines, enzymes, hormones, stem cells, extracted RNA and gene libraries and important biological and chemical

## FEATURES



### Fast pull down

Real forced air cooling system



### Specialized temp. sensor

High precise probe



### Suction circulation system

Fan for better temp uniformity



### Internal LED lighting

Easy to observe the interior



### Lockable doors

3 Standard locks with keys for 3 doors



### High-quality steel materials

Antibacterial and corrosion resistant



### Precise temp. control

Temp. control accurate to 0.1°C



### 5 types of alarm

Audible and visual alarms



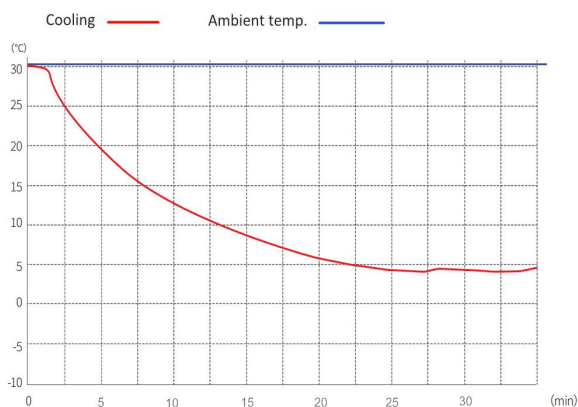
### Variable space

Height adjustable shelves

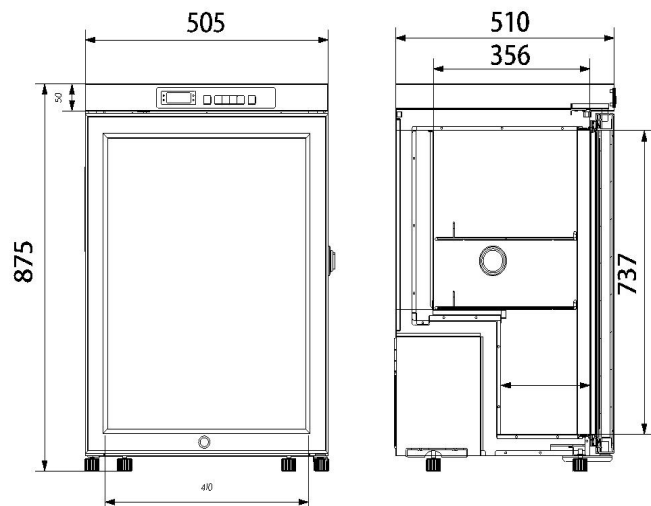


### Eco-friendly

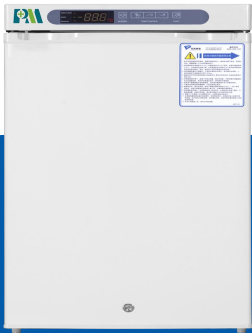
CFC-free refrigerant and energy-saving



MPC-5V100 Pull Down Curve



# STRUCTURE



Low-E double-layer glass

High/low temp. alarm

Power failure alarm

Door ajar alarm

Thermostat failure alarm



Real forced air circulation and excellent refrigeration system pull down the chamber temperature rapidly. And keep the chamber with good temperature uniformity and fluctuation.

# PARAMETER

Performance		Refrigeration System		Alarms	
Cooling method	Forced Air Cooling	Refrigerant	R600a	High/low temperature	Y
Defrost	Auto	Temp. controller	Microprocessor	Power failure	Y
Shelf/drawer	Shelves/3	Sensor	NTC	Sensor error	Y
Temperature range	2°C~8°C	Display	Digital display	Controller failure	Y
Ambient temperature	10~32°C	External material	SPCC sprayed steel	Door ajar	Y
Noise (db)	50	Compressor QTY	1	Power failure backup	8 hours
Electrical Data		Dimensions		Other	
Voltage frequency( V/Hz)	220V 50Hz/60Hz	Package size(W*D*H)(mm)	580*580*940	Inside door	3 shelves
Power (W)	80	Capacity (L/cu.ft)	100/3.53	Lighting	LED
Current (A)	0.8	Exterior size(W*D*H)(mm)	505*510*875	Access port QTY/Dia.	1/25mm
Power consumption	1.15kWh/24h	Interior size(W*D*H)(mm)	385*356*737	Internal material	HIPS